



Denham Road, Whetstone, N20 0EE
£1,700 Per Calendar Month Council Tax Band E

REAL ESTATES
Est.1981

Estate Agents · Residential Sales · Investments · Lettings

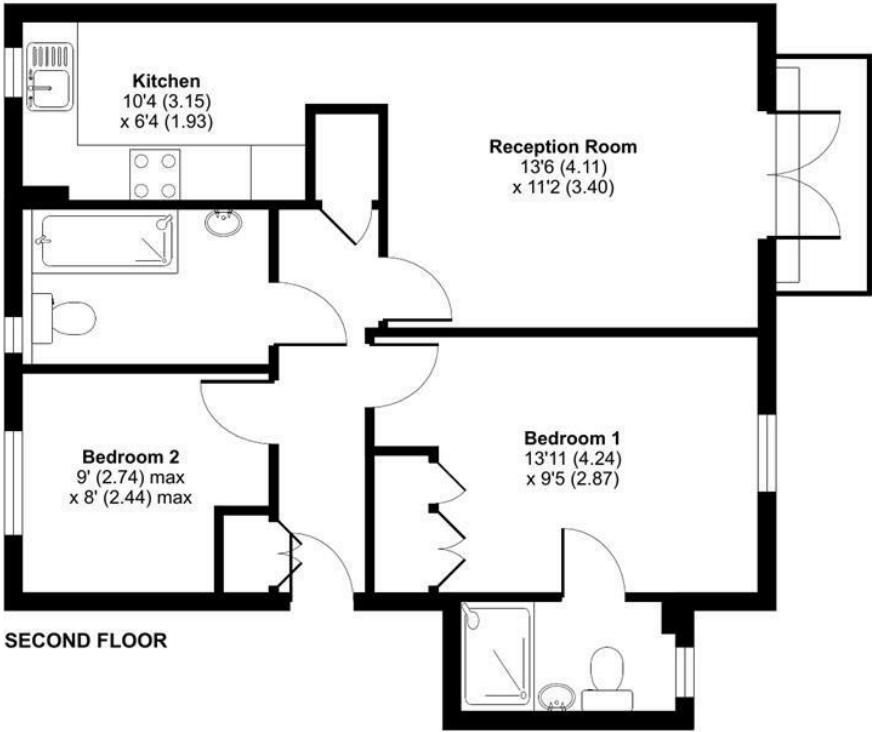
***AVAILABLE MIDDLE OF APRIL * FURNISHED/UNFURNISHED * A**
well presented 2 BEDROOM 2 BATHROOM (1 EN SUITE) 2ND FLOOR
APARTMENT comprising lounge/dining room with access to balcony, modern
fitted kitchen, utility cupboard, master bedroom with en suite shower room,
bedroom 2 and family bathroom. Residents parking. Communal gardens. NB.
there is no lift in this block.

Both Oakleigh Park Mainline Station and Totteridge & Whetstone Northern
Line tube station are within easy reach. Local shops including Tesco Express
are just a short walk away.

Energy Efficiency Rating		
	Current	Potential
Very energy efficient - lower running costs		
(92 plus) A		
(81-91) B	82	82
(69-80) C		
(55-68) D		
(39-54) E		
(21-38) F		
(1-20) G		
Not energy efficient - higher running costs		
England & Wales	EU Directive 2002/91/EC	

Denham Road, London, N20

Total = 592 sq ft / 54.9 sq m
For identification only - Not to scale



Floor plan produced in accordance with RICS Property Measurement Standards incorporating
International Property Measurement Standards (IPMS2 Residential). © nichecom 2023.
Produced for Real Estates. REF: 934850